



A BRIEF OVERVIEW OF THE

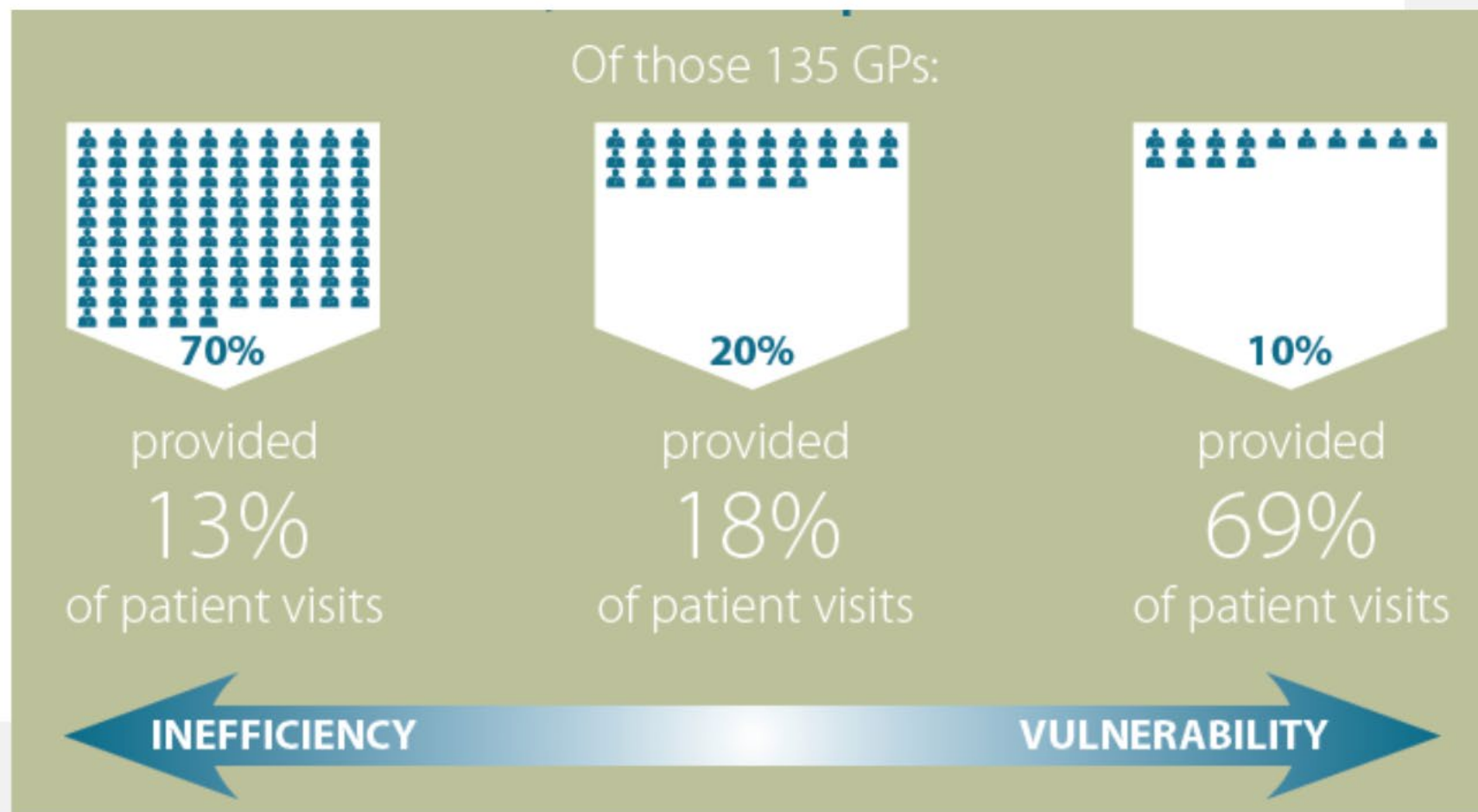
VIC-SI LTICI

STEERING COMMITTEE

NOVEMBER, 2022



In 2012/13 in Victoria, 135 GPs had patients in residential care.





The Residential Care Initiative

In 2015, the General Practice Services Committee (GPSC) launched a province-wide Residential Care Initiative (RCI) to address:

- Diminishing GP engagement & barriers in residential care
- Growth in the residential care population

Locally, the Victoria and South Island Divisions of Family Practice work together to meet:



*& 6 Best Practice Expectations
3 System Level Outcomes*



BACKGROUND: LTCl Funding


GPSC LTCl Funding Agreement

- Calculated by multiplying the number of beds in a community X \$400/bed/year, to arrive at an annual lump sum for the community's LTCl program
- With 3,441 beds in the Victoria-South Island region, the annual local funding is \$1,376,400

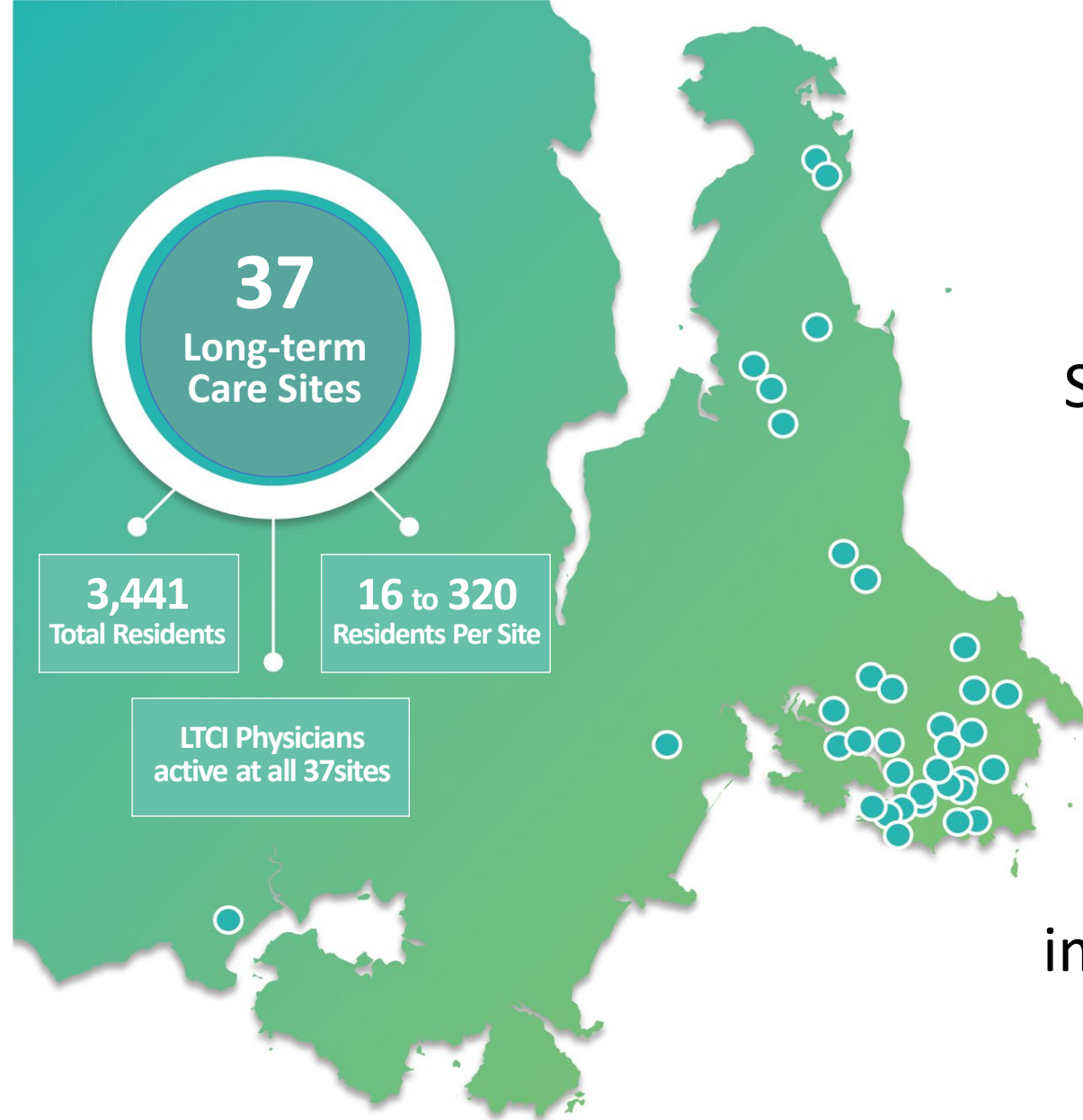
LTCI Best Practice Expectations (BPEs)



LTCI System Level Outcomes

-  24/7 availability and on-site attendance, when required
-  Proactive visits to residents
-  Meaningful medication reviews
-  Completed documentation
-  Attendance at case conferences
-  *Vic-SI LTCI added:* Participation in Quality Improvement (e.g. quarterly meetings)





Vic-SI LTCI

Since August of 2015, the South Island and Victoria Divisions of Family Practice have worked together to develop a unified regional approach to implementing the LTCI

In 2015, the LTCI surveyed physicians prior to the launch of the program....

98 physicians responded to the survey

→ $\frac{1}{3}$ from the South Island Division

→ $\frac{2}{3}$ from the Victoria Division



We learned....



Priorities...

Supports

- Increased remuneration
- Patients concentrated at one care home
- Network of support from colleagues/GPs
- Less frequent/lighter on call
- Billing optimization support

Funding

- Direct physician compensation
- Care home organizational improvement
- Education for physicians
- Quality improvement/evaluation
- Program administration and coordination



PRACTICE MODEL INNOVATION

Emphasis on developing, implementing, and maintaining models for

Practice Innovation:

- TORCH Physician Model
- CORE Physician Model
- Distributed model with BPEs fully implemented
- Models at MSM and TLAB

EXCELLENT CARE

Establishing and consistently meeting **Standards of Care**, in collaboration with key stakeholders, including:

- Best Practice Expectations: implementation and data-driven accountability strategies
- Quality Improvement: chart audits, common documentation

PRACTICE SUPPORT

Provide **Practice Support** to encourage participation and reduce barriers:

- Quarterly payments
- Special one-time incentives
- Clinical learning
- Billing / Parking / Admin
- Scholarship fund; QI seed fund



- Juna Cizman: VDFP 2014-2021, Program Manager Vic-SI LTCI
- Carolyn Brandly: 2016-2017 Strategic Consultant
- Jessica Swinburnson: VDFP, 2016 LTCI Operations Lead
- Emily Charter: 2018-2019 LTCI Program Coordinator, Administration
- Meaghan Valade: 2018 Masters of Social Work Practicum Placement
- Annebeth Leurs: 2018 -2021 LTCI Program Coordinator, Long-Term Care Quality Improvement Support
- Fiona Sudbury: 2019-present LTCI Program Consultant

- Cherie Wheeler: 2018-2022 LTCI Program Coordinator, Long-Term Care Quality Improvement Support
- Erin Horne: 2018-2019 LTCI Program Coordinator, Long-Term Care Quality Improvement Support
- Megan Schulz: 2019-2021 LTCI Program Coordinator, Quality Improvement and Clinical Support
- Sunita Maghera: 2020 –present Long-Term Care Initiative/Victoria Division Administrative Assistant
- Gillian Swinburnson: 2022-present Program Support Contractor





- GPSC Task Group
- COVID
- Staffing crisis

GPSC LTC Task Group:

- implement recommendations from provincial LTCI Service Review report (data from 2019/20)
- ToR deliverable 1.1 – “Clarify process & details regarding the return of LTCI funding surpluses to GPSC as directed by the committee”
- Sometime between the report (produced in 2020) & the GPSC Task Group (2021), GPSC decided local LTCIs should return surpluses

high level
summary + aims

GPSC decision
regarding return
of unspent LTCI
funds

1

Significant impacts
to Vic-SI LTCI
programming

2

Strategies to
mitigate risks

3



Vic-SI LTCI Data Trends show that from 2014/15 to 2021/2022

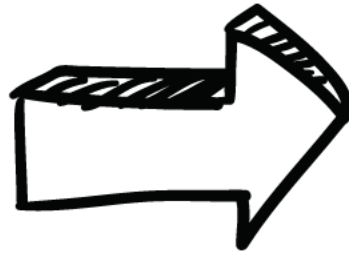
- a 300% relative increase in care conference attendance
- an 89% relative increase in proactive visiting
- a 52% reduction in residents prescribed 9+ medications
- a 71% reduction in unscheduled ED transfers, among other LTC BPE gains

BACKGROUND:

Unspent Funds
Contributions to
Achievements

Supports...

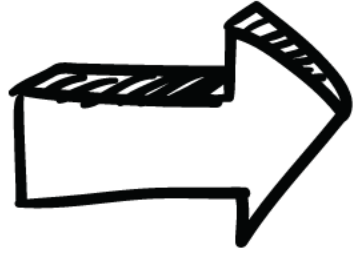
- Increased remuneration
- Patients concentrated at one care home
- Network of support from colleagues/GPs
- Less frequent/lighter on call
- Billing optimization support



- *\$225/resident + stipend for after-hours (\$887-\$2330/slot of call)*
- *Practice models at 24/37 sites which encourage ideal panel sizes*
- *Working groups & supports*
- *After-hours call coverage at all 37 sites and 3400+ system beds*
- *Vic-SI LTCL Billing Guide & access to billing consultant*

Funding...

- Direct physician compensation
- Care home organizational improvement
- Education for physicians
- Quality improvement/evaluation
- Program administration and coordination



- *Direct quarterly payments*
- *Practice models at 24/37 sites*
- *Monthly CME events*
- *Annual evaluation*
- *Robust program supports*



LTCI MOBILIZATION WORK

use of the unspent funds



Preparing for Reduced Coordinator Time

- Practice model implementation resource package
- Orientation package for new care home leaders
- Practice model rubric to assist in to classifying the degree of coordination at the care home level
- After-Hours Call Group (AHCG) training module: fourteen short videos and multiple-choice questions providing an overview of call group, how to use the SBAR, and top reasons for call
- AHCG packages: dropping off updated call group posters, SBARs, order sets, Notification of Death Tool
- Administrative tools and videos: creating and disbursing administrative tools to build capacity and support care homes



Suggestions from LTCI Physicians

- Mobilization Activities as Suggested by LTCI Physicians
- Best Practice Expectation resource packages and indexes:
 - Care Conferences tools and processes
 - Chart Review tools & processes
- UTI SBAR
- LTC Physician Workforce and Practice Planning one-on-one interviews
- Steering Committee group development, facilitated leadership during change sessions with Vantage booked for April, June, and October 2022
- Formation of LTC Community of Practice Group
- Bonus' for LTCI Physicians in recognition of service



Mobilization Activities Preparing for Reduced Coordinator Time

- Practice model implementation resource package
- Orientation package for new care home leaders
- Practice model rubric to assist in to classifying the degree of coordination at the care home level
- After-Hours Call Group (AHCG) training module: fourteen short videos and multiple-choice questions providing an overview of call group, how to use the SBAR, and top reasons for call
- AHCG packages: dropping off updated call group posters, SBARs, order sets, Notification of Death Tool
- Administrative tools and videos: creating and disbursing administrative tools to build capacity and support care homes

Mobilization Activities as Suggested by LTCI Physicians

- Best Practice Expectation resource packages and indexes:
 - Care Conferences tools and processes
 - Chart Review tools & processes
- UTI SBAR
- LTC Physician Workforce and Practice Planning one-on-one interviews
- Steering Committee group development, facilitated leadership during change sessions with Vantage booked for April, June, and October 2022
- Formation of LTC Community of Practice Group
- Bonus' for LTCI Physicians in recognition of service



What's next for the LTCI?

- 5+ physicians leaving the LTC system
- Additional retirements expected in 2023
- No current replacements
- As many as 15 new physicians needed





Physician Engagement

March 2016:

- **47** active LTCL physicians-MRP for **68.9%** of residents
- **197** physicians in total with residents in LTC



October 2022:

- **72** active LTCL physicians-MRP for **98.7%** of residents
- **106** physicians in total with residents in LTC





THE END

THANK YOU!

